

Brake & Clutch Bleeding Equipment

Brake and Clutch Bleeding Equipment

Mityvac offers several great options to meet your unique hydraulic brake and clutch bleeding requirements. Our manual pressure bleeder and selection of manual and compressed air-operated vacuum bleeders provide a clean, economic one-person method of removing old fluid and trapped air from hydraulic systems. Each is designed and manufactured for exceptional performance, and includes a selection of convenient, time-saving accessories.

MV6838 Master Vacuum Brake Bleed Kit

Mityvac model MV6838 is the most complete vacuum brake bleeding and master cylinder refill kit available. It features our powerful MV6830 vacuum brake bleeder combined with our master cylinder auto-refill kit. Everything is provided to quickly and conveniently vacuum bleed virtually every make and model of vehicle on the road.

Features:

- Compressed air operation
- Integrated 1.9 quart (1.8 liter) capacity fluid collection reservoir
- Variable control thumb throttle
- Swivel air inlet with quick-disconnect
- Automatically maintains fluid level in master cylinder
- Two refill kit styles ensure a fit to all makes and models of vehicles

Includes:

- Brake bleeder
- 6' (1.8 m) bleed hose assembly
- 4' (1.2 m) fluid evacuation hose
- Molded base with screws for bench mounting
- Hanging hook
- 3 Universal bleed screw adapters
- Master Auto-refill Kit
- User manual (English/French/Spanish/German)



MV6838

Specifications:

Bleeder Reservoir Capacity:	1.9 quarts (1.8 liters)
Refill Reservoir Capacity:	40 oz (1.2 liters)
Working Pressure:	60 – 150 psi (4.1 – 10.3 bar)
Vacuum @ 90 psi (6.2 bar):	26 in. Hg (88 kPa)
Air Consumption @ 90 psi (6.2 bar):	4.3 cfm (2.0 l/s)
Flow Rate @ 60 psi (4.1 bar):	50 oz/min (1460 ml/min)
@ 90 psi (6.2 bar):	70 oz/min (2100 ml/min)
@ 150 psi (10.3 bar):	70 oz/min (2100 ml/min)
Inlet Thread Size:	¼" NPT
Packaged Weight:	6.73 lbs (3.05 kg)
Size:	15.5" wide x 10.8" tall x 8.8" deep (395 mm wide x 275 mm tall x 225 mm deep)

MV6835 Premium Vacuum Brake Bleed Kit

Model MV6835 extends the capabilities of our MV6830 vacuum brake bleeder by including our MVA6832 Clamp-on Auto-refill Kit. While the bleeder can evacuate up to 2 quarts (2 liters) per minute, the refill kit ensures the master cylinder does not run dry of new fluid, making this kit an extremely efficient method of bleeding hydraulic brake and clutch systems.

Features:

- Same as MV6838

Includes:

- Same as MV6838 except includes clamp-on style auto-refill kit (MVA6832) instead of Master Auto-refill Kit

Specifications

Bleeder Reservoir Capacity:	1.9 quarts (1.8 liters)
Refill Reservoir Capacity:	40 oz (1.2 liters)
Working Pressure:	60 – 150 psi (4.1 – 10.3 bar)
Vacuum @ 90 psi (6.2 bar):	26 in. Hg (88 kPa)
Air Consumption @ 90 psi (6.2 bar):	4.3 cfm (2.0 l/s)
Flow Rate @ 60 psi (4.1 bar):	50 oz/min (1460 ml/min)
@ 90 psi (6.2 bar):	70 oz/min (2100 ml/min)
@ 150 psi (10.3 bar):	70 oz/min (2100 ml/min)
Inlet Thread Size:	¼" NPT
Packaged Weight:	5.1 lbs (2.3 kg)
Packaged Size:	11.5" wide x 10.8" tall x 8.8" deep (290 mm wide x 275 mm tall x 225 mm deep)



MV6835

See pages 5 – 6 for our line of Hand Pump Brake Bleeding Kits

Brake & Clutch Bleeding Equipment

MV6830 Vacuum Brake Bleeder

The compressed-air-operated MV6830 offers professional-grade brake and clutch bleeding performance. This compact yet powerful unit bleeds up to 2 quarts (1.9 liters) per minute, and its simple operation allows clean, quick bleeding of brake and clutch lines. Kit includes an advanced selection of accessories that ensure maximum convenience and performance for greater productivity.



Features:

- Compressed air operation
- Integrated 1.9 quart (1.8 liter) capacity fluid collection reservoir
- Variable control thumb throttle
- Swivel air inlet with quick-disconnect
- Quick-disconnect coupler for accessories
- Quiet, muffled exhaust
- Automatic overflow prevention

Includes:

- Brake bleeder
- 6' (1.8 m) bleed hose assembly
- 4' (1.2 m) fluid evacuation hose
- Molded base with screws for bench mounting
- Automatic fluid refill kit (MVA6825)
- Hanging hook
- 3 Universal bleed screw adapters
- User manual (English/French/Spanish/German)

Specifications:

Reservoir Capacity:	1.9 quarts (1.8 liters)
Working Pressure:	60 - 150 psi (4.1 - 10.3 bar)
Vacuum @ 90 psi (6.2 bar):	26 in. Hg (88 kPa)
Air Consumption @ 90 psi (6.2 bar):	4.3 cfm (2.0 l/s)
Flow Rate @ 60 psi (4.1 bar):	50 oz/min (1460 ml/min)
@ 90 psi (6.2 bar):	70 oz/min (2100 ml/min)
@ 150 psi (10.3 bar):	70 oz/min (2100 ml/min)
Inlet Thread Size:	1/4" NPT
Packaged Weight:	5.0 lbs (2.3 kg)
Size:	9" tall x 6.5" dia. (230 mm tall x 150 mm dia.)



MV6830

MVA6832 Clamp-on Auto-refill Kit

MVA6832 uses gravity to automatically refill the master cylinder during vacuum or manual hydraulic brake or clutch bleeding/flushing. It includes a 40 oz (1.2 l) reservoir that mounts on top of the master cylinder and clamps securely to the wall. As old brake fluid is bled from the hydraulic system through the bleed screws, new fluid flows automatically from the reservoir to replenish the master cylinder.

Features:

- Large 40 oz (1.2 l) reservoir holds enough fluid for an entire flush
- On/Off valve controls the flow of fluid from the reservoir
- Fluid level control maintains the correct level of fluid in the master cylinder
- Conveniently adapts for use with standard 12 oz (355 ml) and 32 oz (946 ml) brake fluid bottles
- Universal top-mount design fits most types of master cylinders

Includes:

- 40 oz (1.2 l) fluid reservoir with transfer and storage lid
- Base with screw clamp
- Transfer tube with valve
- Level adjustment spring
- 12 oz (355 ml) bottle adapter
- 32 oz (946 ml) bottle adapter
- User manual (English/French/Spanish/German)

Specifications:

Reservoir Capacity:	40 oz (1.2 l)
Packaged Weight:	13.4 oz (0.38 kg)
Packaged Size:	6.5" wide x 5" tall x 6.3" deep (165 mm wide x 125 mm tall x 160 mm deep)



MVA6832

Brake & Clutch Bleeding Equipment

MVA6834 Plate-style Auto-refill Upgrade Kit

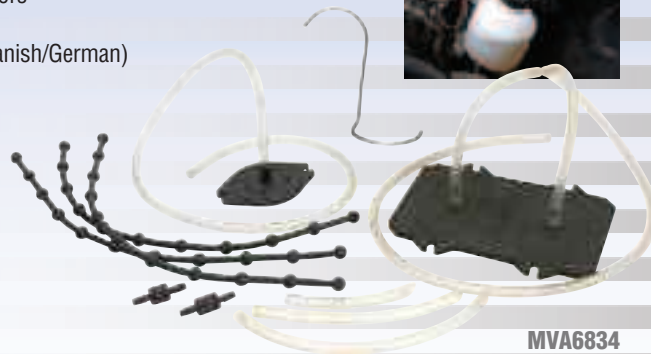
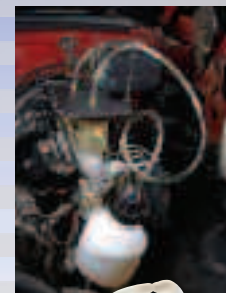
Upgrade your MVA6832 Clamp-on Auto-refill Kit with MVA6834, to create our Master Auto-refill Kit. The plates included with MVA6834 significantly expand the number of applications to include dual chamber and small neck master cylinders, as well as low clearance applications.

Features:

- Extends applications of MVA6832 Clamp-on Auto-refill Kit to include dual chamber and small neck master cylinders
- Refills master cylinder automatically using vacuum produced while brake bleeding
- Utilizes 40 oz (1.2 l) reservoir included with MVA6832 for bulk dispensing and multiple brake jobs
- Adapts for use with standard 12 oz (355 ml) and 32 oz (946 ml) bottles of brake fluid
- Plates are manufactured from durable composite material with foam underside to ensure an airtight seal with master cylinder
- Round and rectangular plates fit virtually every master cylinder

Includes:

- Rectangular dual chamber refill plate
- Round refill plate
- Adjustable length rubber cords
- Fluid transfer tubes with connectors
- Reservoir hanging hook
- User manual (English/French/Spanish/German)



MVA6834

Specifications:

Packaged Weight:	1.10 lbs (0.50 kg)
Packaged Size:	8.5" wide x 7.0" tall x 4.5" deep (215 mm wide x 180 mm tall x 115 mm deep)

MVA6837 Brake Bleed Reservoir Kit

Model MVA6837 reservoir kit is specially designed to capture brake fluid expelled from the bleed screw when pressure or gravity brake bleeding is performed. The kit includes the Mityvac universal bleed screw adapter, which forms a tight seal around the bleed screw to ensure a clean, efficient bleed job.

Features:

- Universal bleed screw adapter forms tight seal to prevent leakage
- 40 oz (1.2 l) reservoir holds enough fluid for an entire flush
- Includes hook for hanging the reservoir near the bleed location

Includes:

- 40 oz (1.2 l) fluid reservoir
- Universal bleed screw adapter
- Fluid transfer tube
- Hanging hook



MVA6837

Specifications:

Reservoir Capacity:	40 oz (1.2 liters)
Packaged Weight:	2.1 lbs (1.0 kg)
Packaged Size:	5.0" deep x 8.0" wide x 8.0" tall (125 mm deep x 205 mm wide x 205 mm tall)