

# Accessories

## Hand Vacuum Pumps

### MVA6176 Compound Vacuum/Pressure Gauge (PSI/in-Hg)

Durable, high-quality 2" diameter compound vacuum/pressure gauge with accurate gearless diaphragm movement and protective rubber boot. Special stem design allows convenient 360° rotation and easy pin-release removal. Replaces original gauge on all Mityvac Silverline Elite and Selectline models, or additional option for pumps purchased without gauge. Includes locking pin. Indicates 0-30 psi (0-200 kPa) pressure and 0-30 inches of Mercury (0-100 kPa) vacuum.

**Specifications:**

Weight:	6.1 oz (173 g)
Size:	2 <sup>3</sup> / <sub>4</sub> " x 1 <sup>1</sup> / <sub>2</sub> " x 3 <sup>1</sup> / <sub>2</sub> " (70 mm x 40 mm x 90 mm)



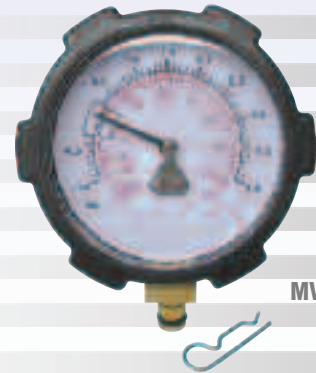
MVA6176

### MVA6177 Compound Vacuum/Pressure Gauge (Bar)

Durable, high-quality 2 1/2" diameter compound vacuum/pressure gauge with accurate gearless diaphragm movement and protective rubber boot. Special stem design allows convenient 360° rotation and easy pin-release removal. Replaces original gauge on all Mityvac Silverline Elite and Selectline models, or additional option for pumps purchased without gauge. Includes locking pin. Indicates 0-4 bar (0-60 psi) pressure and -1-0 bar (0-30 inches of Mercury) vacuum.

**Specifications:**

Weight:	6.1 oz (173 g)
Size:	2 <sup>3</sup> / <sub>4</sub> " x 1 <sup>1</sup> / <sub>2</sub> " x 3 <sup>1</sup> / <sub>2</sub> " (70 mm x 40 mm x 90 mm)



MVA6177

### MVA6178 Vacuum Gauge

Durable, high-quality vacuum gauge with accurate diaphragm movement. Special stem design allows convenient 360° rotation of gauge and easy pin-release removal. Replaces original gauge on Mityvac line and Selectline hand pumps or additional option for pumps purchased without gauge. Indicates 0-30 inches of Mercury (0-100 kPa) vacuum.

**Specifications:**

Weight:	6.1 oz (173 g)
Size:	2 <sup>3</sup> / <sub>4</sub> " x 1 <sup>1</sup> / <sub>2</sub> " x 3 <sup>1</sup> / <sub>2</sub> " (70 mm x 40 mm x 90 mm)



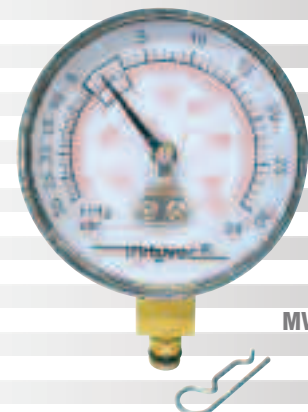
MVA6178

### MVA6181 Compound Vacuum/Pressure Gauge

Durable, high-quality compound vacuum/pressure gauge with accurate gearless diaphragm movement. Special stem design allows convenient 360° rotation and easy pin-release removal. Replaces original gauge on all Mityvac Selectline dual vacuum/pressure models. Includes locking pin. Indicates 0-30 psi (0-200 kPa) pressure and 0-30 inches of Mercury (0-100 kPa) vacuum.

**Specifications:**

Weight:	6.1 oz (173 g)
Size:	2 <sup>3</sup> / <sub>4</sub> " x 1 <sup>1</sup> / <sub>2</sub> " x 3 <sup>1</sup> / <sub>2</sub> " (70 mm x 40 mm x 90 mm)



MVA6181

# Accessories



MVA6000

## MVA6000 Complete Automotive Accessory Kit

Kit contains accessories for testing and diagnosing dozens of engine performance and automotive mechanical functions and for one-person brake and hydraulic clutch bleeding. All components are designed for use with Mityvac Silverline and Selectline hand vacuum and dual pressure/vacuum hand pumps.

### Includes:

- (4) Tapered adapters for connecting to tubing from .090" to .50" ID (2.3 mm to 12.7 mm ID)
- (2) Tapered manifold plugs
- (12) Color-coded vacuum line plugs
- (2) Universal bleed screw adapters for connecting to hydraulic bleed screws
- Automatic master cylinder refill kit
- 4.5 oz Reservoir bottle with fluid transfer and storage lid
- (2) 1/4" ID x 24" long (6.4 mm ID x 610 mm long) connection hoses
- User manual (English/French/Spanish/German)

### Specifications:

Weight: 14.8 oz (420 g)



MVA6825

## MVA6825 Master Cylinder Refill Kit

Eliminates the need to repeatedly top-off the brake master cylinder or clutch slave cylinder while vacuum bleeding. Fluid level is automatically maintained, preventing air from being reintroduced into brake and clutch lines. The kit adapts to standard 12 oz and 32 oz brake fluid bottles, eliminating the mess and hassle of transferring fluid into a reservoir and maintaining brake fluid integrity.

### Kit includes:

- 12 oz Bottle adapter
- 32 oz Bottle adapter
- 3" (75 mm) diameter master cylinder plate
- 6" (150 mm) diameter master cylinder plate
- 4" x 8" (100 mm x 200 mm) dual chamber master cylinder plate
- Instruction sheet

### Specifications:

Weight: 4.7 oz / 135 g



MVA6005

## MVA6005 16 oz Fluid Reservoir Kit

Used with Mityvac hand vacuum/pressure pumps to collect or dispense larger volumes of fluid. Replaces smaller fluid reservoirs included with most vacuum kits, reducing the amount of time it takes to empty old fluid. A hook is included for conveniently securing the reservoir out of the way during use.

### Kit includes:

- 16 oz (475 ml) capacity reservoir bottle
- Fluid transfer lid
- Fluid storage lid
- Removable hanging hook
- 1/4" ID x 6" long (6.4 mm ID x 150 mm long) fluid pick-up tube

### Specifications:

Weight: 4.4 oz (125 g)



MVA6910

## MVA6910 4.5 oz Fluid Reservoir Kit

Use in-line with Mityvac hand vacuum/pressure pumps to collect or dispense fluid. Replaces standard 4.5 oz reservoirs included with hand pump kits.

### Kit includes:

- 4.5 oz (135 ml) capacity reservoir bottle
- Fluid transfer lid
- Fluid storage lid
- 1/4" ID x 35/8" long (6.4 mm ID x 90 mm long) fluid pick-up tube

### Specifications:

Weight: 2.3 oz (65 g)

## Accessories

### MVA6912 Automotive Test Adapter Kit

Contains plugs, adapters and tubes for use with Mityvac hand vacuum/pressure pumps for testing and diagnosing dozens of vacuum and pressure related engine systems.

**Kit includes:**

- 1/4" ID x 1 1/2" long (6.4 mm ID x 40 mm long) connection tube
- 5/32" ID x 3" long (4 mm ID x 75 mm long) connection tube
- 1/4" ID x 3 5/8" long (6.4 mm ID x 90 mm long) connection tube
- Rubber cup adapter
- 5/32" ID x 1/4" ID (4 mm ID x 6.4 mm ID) tubing adapter
- (4) Tapered adapters for connecting to tubing from .090" to .50" ID (2.3 mm to 12.7 mm ID)
- (2) Tapered manifold plugs



MVA6912

**Specifications:**

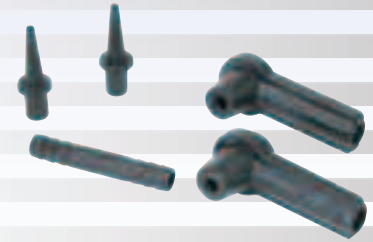
Weight: 0.8 oz (23 g)

### MVA6913 Universal Brake Bleed Adapters

Mityvac's Universal Brake Bleed Adapter is specially designed to fit snugly onto a wide range of brake and hydraulic clutch bleed screws. It forms an airtight seal, and maintains a firm grip on the screw nipple.

**Kit includes:**

- (2) Universal bleed screw adapters
- (2) Tapered bleed adapters
- Brass barbed adapter for connecting to 1/4" (6.4 mm) ID tubing



MVA6913

**Specifications:**

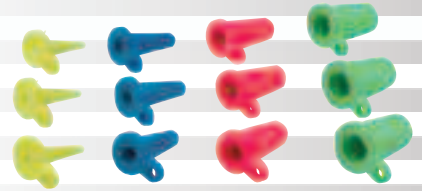
Weight: 0.7 oz (20 g)

### MVA6004 Vacuum Line Caps

Contains 12 rubber caps for plugging vacuum lines while performing in-line vacuum and pressure tests. Caps are color coded for easy line identification and tapered for plugging lines from 5/32"-1/2" ID (4 mm-13 mm ID).

**Specifications:**

Weight: 1 oz (28 g)



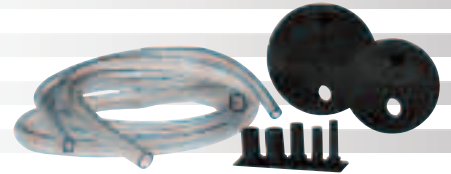
MVA6004

### MVA6845 Mason Jar Kit

Contains accessories for utilizing standard- and wide-mouth mason jars as fluid evacuation or pressure dispensing reservoirs. Works conveniently with Mityvac hand vacuum/pressure pumps.

**Includes:**

- 2 1/4" (70 mm) diameter standard mason jar lid
- 3 5/16" (84 mm) diameter wide-mouth mason jar lid
- (2) 1/4" ID x 48" long (6.4 mm ID x 1220 mm long) connection tubes
- Adapters for tubing sizes 1/8"-1/2" OD (3.2 mm-13 mm OD) and 1/4"-3/8" ID (6.4 mm-9.5 mm ID)



MVA6845

**Specifications:**

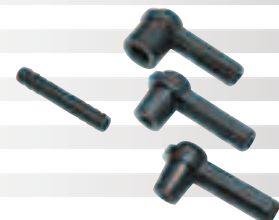
Weight: 6.6 oz (187 g)

### MVA6008 Diesel Fuel Primer Kit

Kit contains three adapters designed for priming the diesel fuel filter using a Mityvac hand vacuum pump or vacuum brake bleeder. Adapters are designed for 6mm, 8mm, and 12mm fuel filter ports.

**Includes:**

- 6 mm primer adapter
- 8 mm primer adapter
- 12 mm primer adapter
- Barbed hose connector



MVA6008

**Specifications:**

Weight: 1.0 oz (28 g)

# Accessories



MVA6001

## MVA6001 Fluid Transfer Kit

Contains reservoir, adapters, tubing and other accessories for siphoning, transferring, extracting or dispensing fluids using a Mityvac hand vacuum/pressure pump.

### Includes:

- 4.5 oz (135 ml) capacity reservoir bottle with fluid transfer and storage lids
- 1/4" ID x 1 1/2" long (6.4 mm ID x 40 mm long) connection tube
- 5/32" ID x 3" long (4 mm ID x 75 mm long) connection tube
- (2) 1/4" ID x 3 5/8" long (6.4 mm ID x 90 mm long) fluid pick-up and connection tubes
- Rubber cupped adapter
- 5/32" ID x 1/4" ID (4 mm ID x 6.4 mm ID) tubing adapter
- (4) Tapered adapters for connecting to tubing from .090" ID to .50" ID (2.3 mm ID to 12.7 mm ID)
- (2) Tapered manifold plugs
- 2 3/4" (70 mm) diameter mason jar lid
- 3 5/16" (84 mm) diameter wide-mouth mason jar lid
- 1/4" ID x 48" long (6.4 mm ID x 1220 mm long) connection tube
- Adapters for tubing sizes 1/8"-1/2" OD (3.2 mm-13 mm OD) and 1/4"-3/8" ID (6.4 mm-9.5 mm ID)
- 3/8" ID x 48" long (9.5 mm ID x 1220 mm long) connection tube

### Specifications:

Weight: 10.3 oz (292 g)



MVA6007

## MVA6007 Dual Adapter Bleed Kit

This specially designed accessory attaches to Mityvac hand vacuum/pressure pumps and vacuum brake bleeding equipment for simultaneous bleeding of motorcycle dual caliper brake systems. Includes clear 1/4" ID (6.4 mm ID) hoses and two universal bleed adapters.

### Specifications:

Weight: 7.6 oz (215 g)



MVA6914

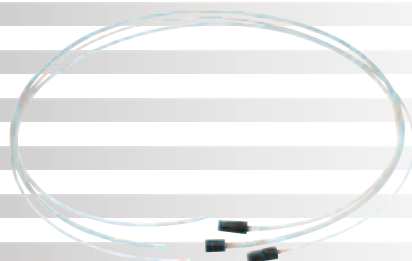
## MVA6914 Vacuum Pump Case

This custom blow-molded case fits Mityvac Silverline and Selectline (except Superpump) vacuum and dual converter pumps, and includes molded compartments for our 4.5 oz reservoir kit, master cylinder refill kit and user manual. Additional space is included for small adapters, plugs, line caps and connector hoses.

### Specifications:

Weight: 1.3 lbs (0.59 kg)

Size: 12" x 8" x 3 3/8" (305 mm x 205 mm x 85 mm)



MVA6006

## Fluid Evacuators

### MVA6006 Extended Tube Kit

Extends the reach of Mityvac fluid evacuators models 07400, 07300 and 07201 by up to 6' (1.8 m). The kit contains a main evacuation tube, two smaller diameter tubes for extending into dipstick tubes and tube connectors. Each tube is 3' (0.9 m) longer than standard, making it convenient for evacuating fluids from taller vehicles such as SUVs and full size trucks.

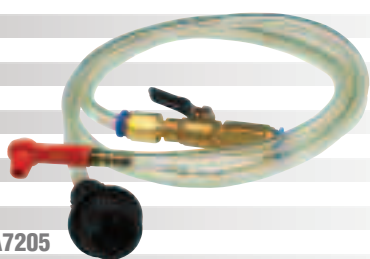
### Kit includes:

- 0.23" OD x 8' long (5.7 mm OD x 2.4 m long) dipstick tube with connector
- 0.26" OD x 8' long (6.6 mm OD x 2.4 m long) dipstick tube with connector
- 0.41" OD x 8' long (10 mm OD x 2.4 m long) main evacuation tube with connector

### Specifications:

Weight: 12.8 oz (365 g)

Carton Size: 13" x 13" x 2" (330 mm x 330 mm x 50 mm)



MVA7205

## MVA7205 Brake Bleed Conversion Kit

The 07205 quickly connects to Mityvac models 07400, 07300 or 07201 fluid evacuators, converting them into one-person vacuum brake or hydraulic clutch bleeders. The kit contains a vacuum bleed tube with brass ball valve, universal bleed screw adapter and adapter for connecting to the evacuator.

### Specifications:

Weight: 9.3 oz (265 g)

Size: 8" x 12" x 1 1/2" (150 mm x 305 mm x 65 mm)

# Numerical Index

<b>Model</b>	<b>Page</b>	<b>Model</b>	<b>Page</b>	<b>Model</b>	<b>Page</b>
MV4506	27	MVA204	24, 26	MVA5552	14
MV4525	21, 23, 24, 25	MVA205	24, 26	MVA5553	13
MV4529	22	MVA206	24, 26	MVA5601	17, 18
MV4530	22, 23, 24, 25	MVA207	25, 26	MVA5602	17, 18
MV5511	20	MVA208	24, 26	MVA5603	17, 18
MV5515	20	MVA209	24, 26	MVA5604	17, 18
MV5520	19	MVA210	25, 26	MVA5605	17, 18
MV5525	20	MVA211	25, 26	MVA5606	17, 18
MV5545	12, 13	MVA212	26	MVA5607	17, 18
MV5546	13	MVA213	24, 26	MVA5608	18
MV5530	15	MVA214	25, 26	MVA5609	18
MV5532	16	MVA400	23, 24, 25	MVA5610	18
MV5534	19	MVA502	14	MVA5611	18
MV5535	17, 18	MVA503	14	MVA5612	18
MV5536	17	MVA504	14	MVA5613	18
MV5570	13	MVA505	14	MVA5614	18
MV5910	28	MVA507	14	MVA5615	18
MV6830	9, 10	MVA508	14	MVA5616	18
MV6835	9	MVA510	14	MVA5617	18
MV6838	9	MVA511	14	MVA5618	18
MV7201	8	MVA512	14	MVA5619	18
MV7241	28	MVA513	14	MVA5620	18
MV7300	7	MVA514	14	MVA5621	18
MV7400	8	MVA515	14	MVA5622	18
MV7430	7	MVA516	14	MVA5623	18
MV7605	28	MVA517	14	MVA5624	18
MV8000	6	MVA518	14	MVA6000	30
MV8010	3, 4	MVA519	14	MVA6001	32
MV8020	6	MVA520	14	MVA6004	31
MV8030	3, 4, 6	MVA521	14	MVA6005	30
MV8121	3, 4	MVA522	14	MVA6006	8, 32
MV8255	3, 4	MVA523	14	MVA6007	32
MV8500	5	MVA524	14	MVA6008	31
MV8510	2, 3, 4, 5	MVA525	14	MVA6176	4, 29
MVA100	21, 22, 26	MVA533	14	MVA6177	29
MVA101	21, 22, 26	MVA534	14	MVA6178	4, 29
MVA102	21, 22, 26	MVA535	14	MVA6181	4, 29
MVA103	21, 22, 26	MVA4535	23	MVA6825	10, 30
MVA104	24, 26	MVA4610	23	MVA6832	9, 10, 11
MVA105	24, 26	MVA4620	24	MVA6834	11
MVA106	24, 26	MVA4630	24	MVA6837	11
MVA107	25, 26	MVA4640	25	MVA6845	31
MVA108	24, 26	MVA4650	25	MVA6910	30
MVA109	24, 26	MVA5501	15	MVA6912	31
MVA110	25, 26	MVA5502	15	MVA6913	31
MVA111	25, 26	MVA5503	15	MVA6914	32
MVA112	26	MVA5504	15	MVA7205	7
MVA113	24, 26	MVA5505	15	MVM8900	4
MVA114	25, 26	MVA5506	15	MVM8901	4
MVA200	23, 26	MVA5507	15	MVM8902	4
MVA201	23, 26	MVA5508	15	MVM8903	4
MVA202	23, 26	MVA5509	15		
MVA203	23, 26	MVA5510	15		